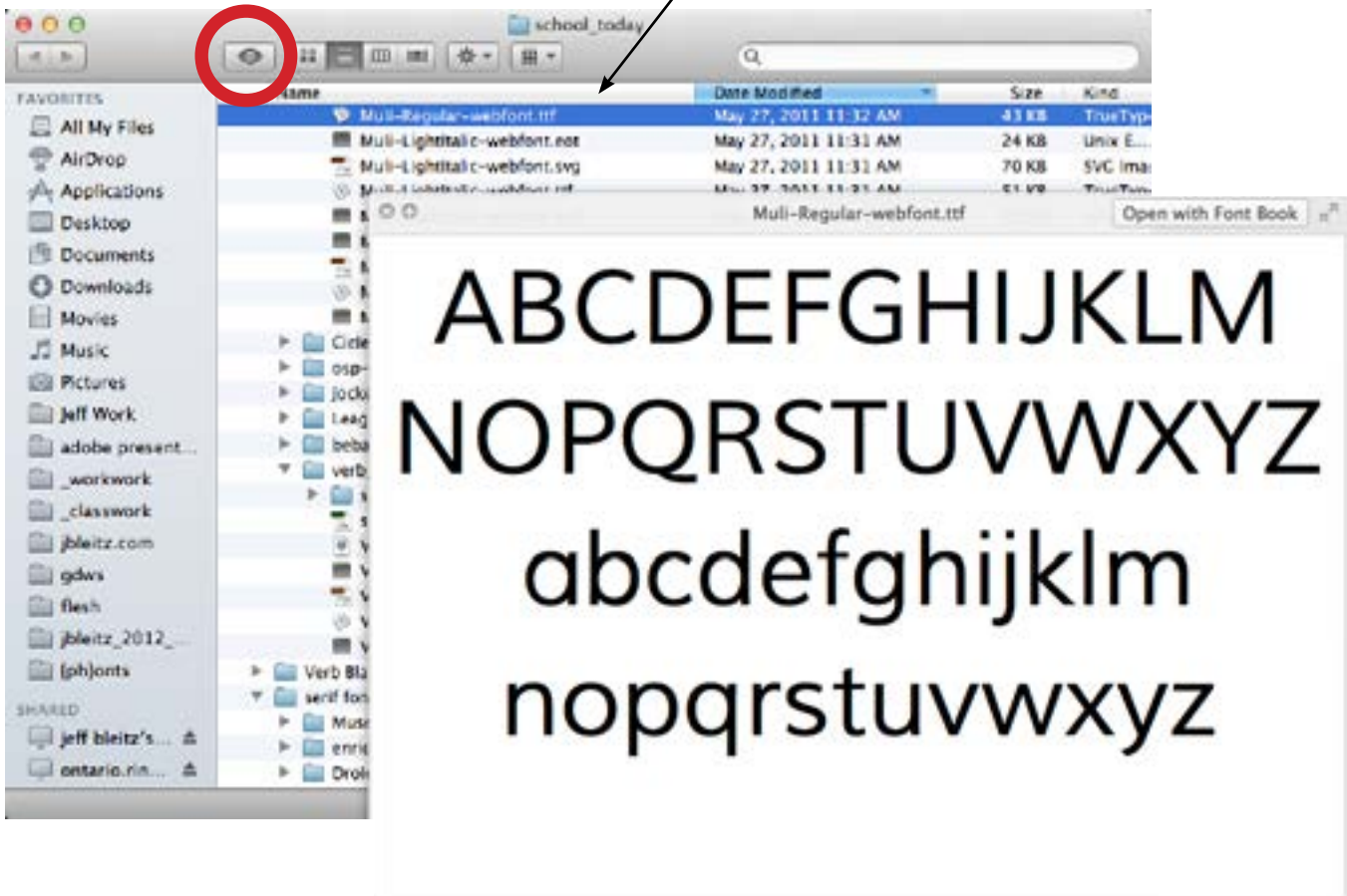


Adding Fonts with @font-face

Previewing Fonts

Preview fonts in the provided folders by selecting the .ttf version and clicking the Quick Look.

TrueType version is the only one which will display in the preview window. All others are also **crucial** for displaying in various browsers but will not display as characters with Quick Look

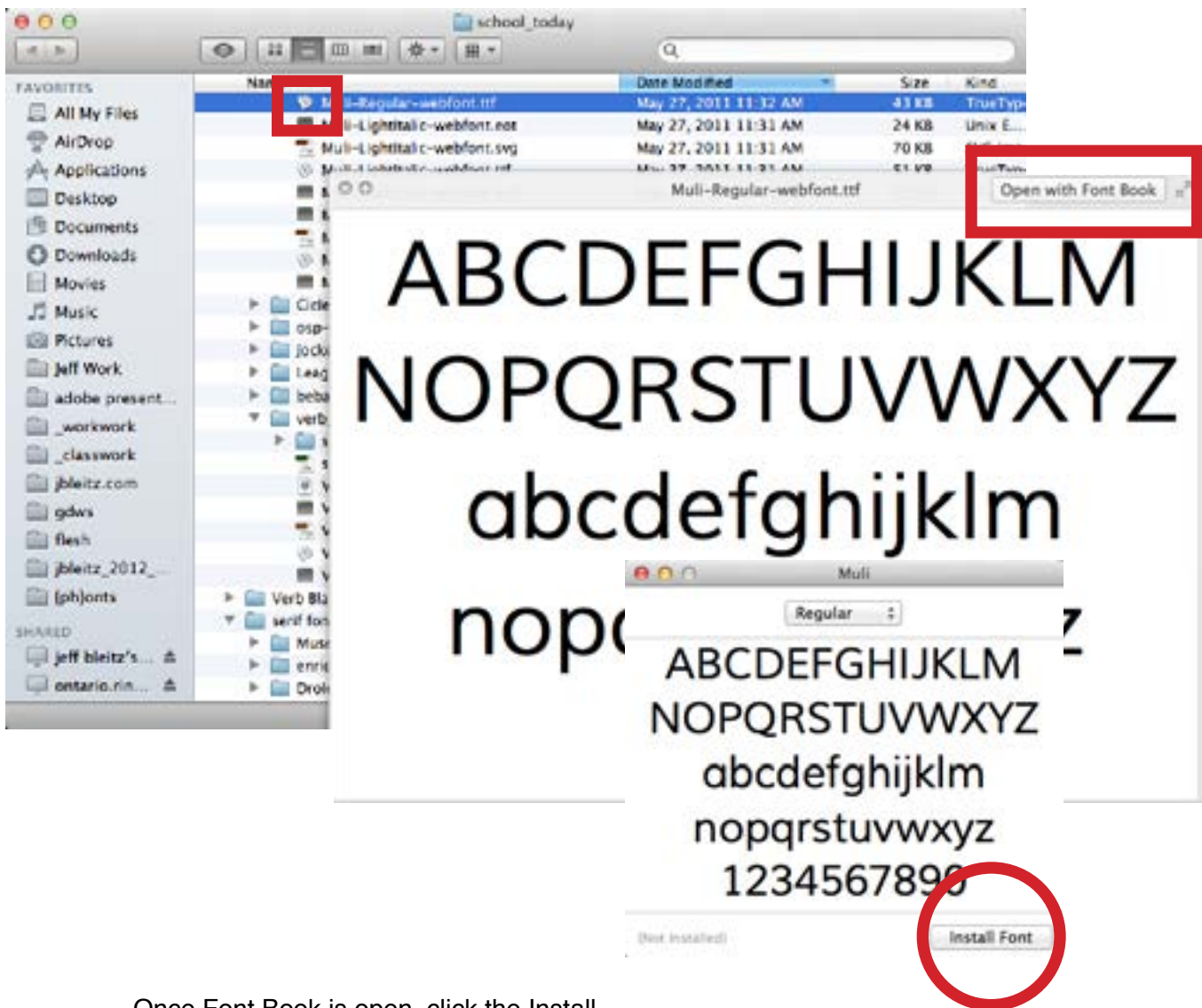


Adding Fonts with @font-face

2

Loading Fonts Use In Illustrator and InDesign

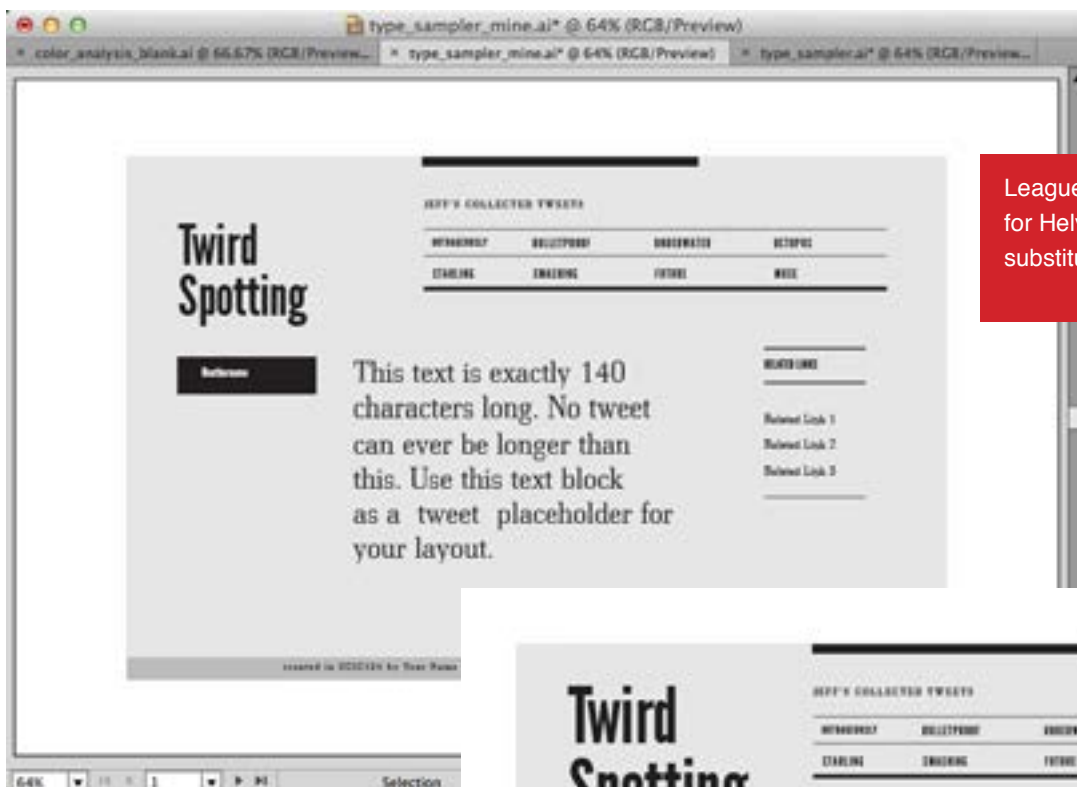
You can either double click the icon for the .ttf, or click the “Open with Font Book” button in the Quick View menu to open Font Book.



Once Font Book is open, click the Install Font button to load the font on your system. **Note, you will need to do this for each style or weight you want to use in a font family.**

Test Fonts in your Layout

Use the `type_sampler` file to test your font selections in your layout. You may use a display face for your title if you wish, but use no more than two typefaces for the rest of your layout. The simplest method is to substitute one font for Helvetica and one for Georgia.



League Gothic Substituted for Helvetica, Bodonitown substituted for Georgia.

Title and author size enlarged to accommodate condensed face.

Note: Depending on the typeface selections and applications, you may wish to revise the size certain text elements. Make note of these as they will need to be made in your CSS as well.

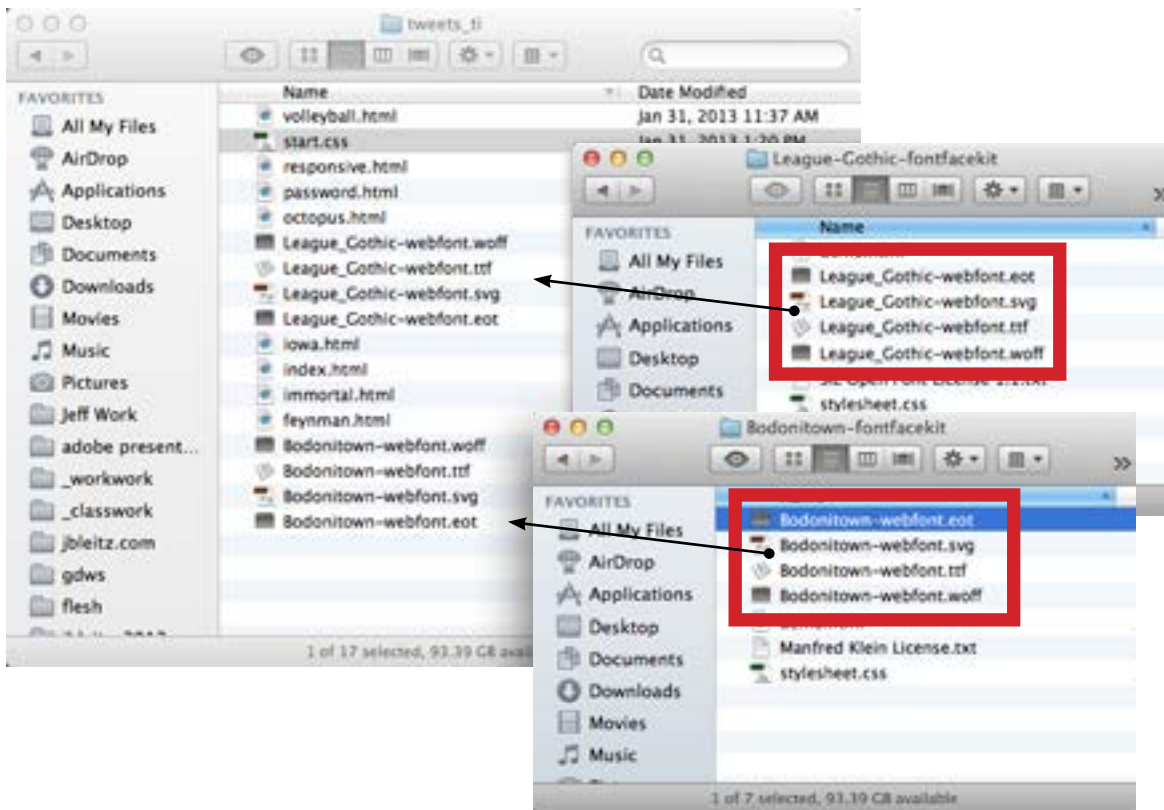


Adding Fonts with @font-face

4

Adding fonts to your website files

For each face you use, hold the option key and drag copies of all formats of that face to the tweets_ti folder that contains your html and css files.

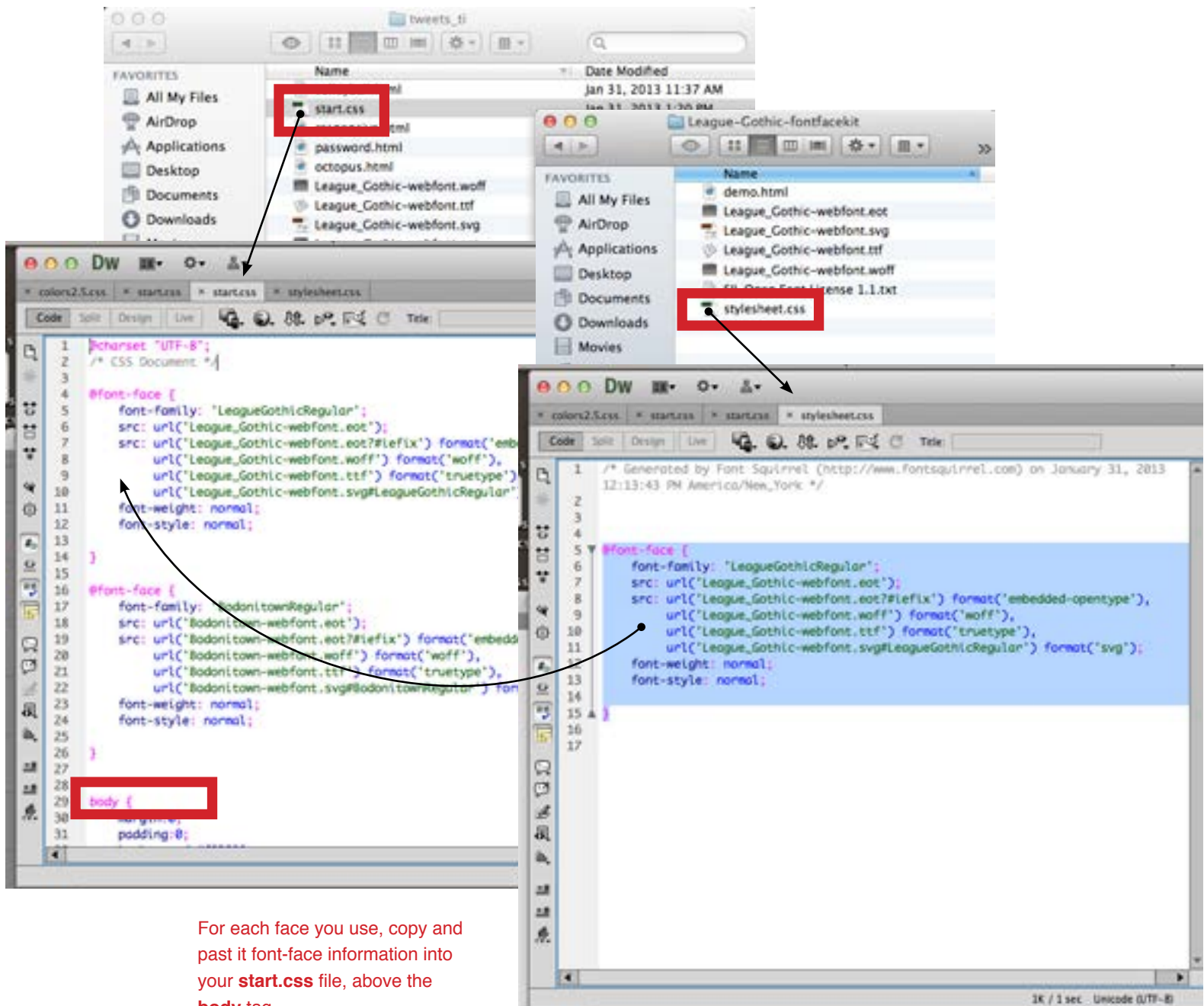


Adding Fonts with @font-face

5

Adding @font-face to your css

Each font kit folder will have a "stylesheet.css" file that already contains the information you will need to copy and paste into your start.css in order to make the fonts available to the browser.



For each face you use, copy and paste it font-face information into your **start.css** file, above the **body** tag.

Adding Fonts with @font-face

6

Update your tag and class descriptions

Scroll through the rest of your start.css list and use the font-family name from the @font-face descriptions to update the descriptors for your h1, h2 etc.

